



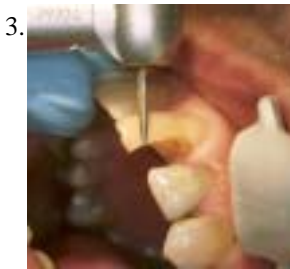
## Application information Quadrant Universal LC Anterior restoration



21 old discolored restoration.



Define shade with Quadrant Universal LC shadeguide, made of original composite.



Prepare the cavity according to the general directions for composite restorations.



Clean and dry the preparation. Apply wedges and matrixband. The use of rubberdam is recommended.



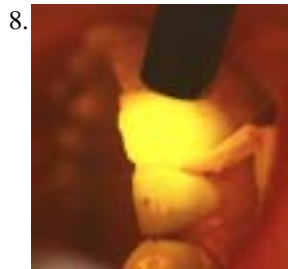
Apply Quadrant Total Etch onto enamel and dentin and leave for 15-30 seconds. Rinse thoroughly for at least 5 seconds. Remove excess moisture with a gentle



Apply 3 layers of Quadrant Uni-1-Bond Wait for 15 seconds and lightcure for 20 seconds.



Apply several layers (max. 2 mm) of Quadrant Universal LC of the necessary shades.



Light cure every layer for 20 seconds.



Finish and polish with fine diamond, flexible discs and silicon polishers.



Result after restoration.

*Quadrant, from Cavex, offers a carefully matched range of adhesive materials that provide the appropriate solution for every "quadrant". It includes light- and chemically-cured composites, bonding systems, core build-up material, adhesive cement, a desensitizing primer and a caries indicator. The Q-System is specially developed for the dental practice. For dental use only.*